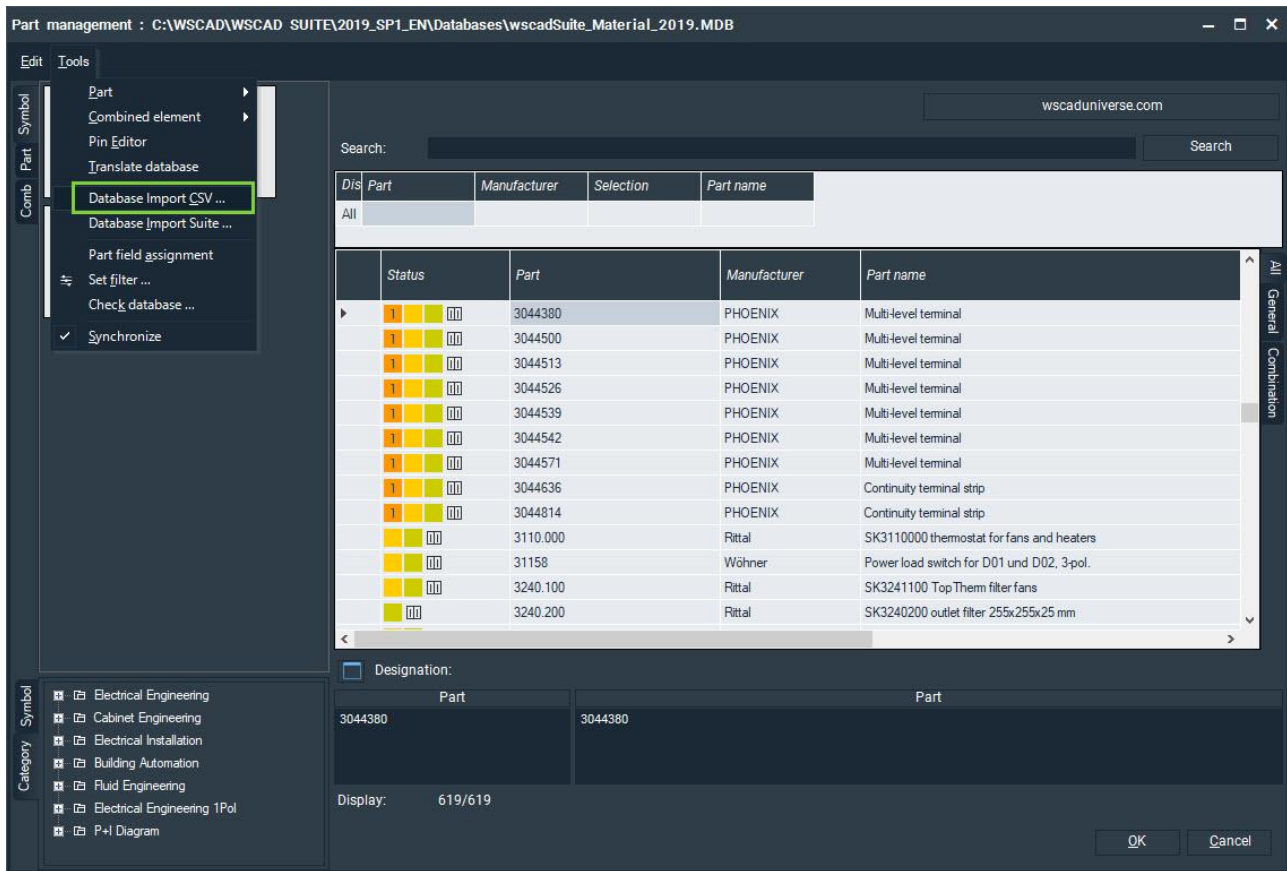


# SUITE X: Importing a CSV Part File



You can import the part data of a CSV file into the current WSCAD SUITE part database. Each column of the CSV file can be assigned to a part database field in the process. Even columns in different languages (e.g., with the part names additionally in English and French) can be imported multilingually.

When importing, you specify whether the CSV file contains column headings and with which character the individual data records are separated from one another (e.g., semicolons or tabs).

	A	B	C	D	E	F	G	H
1	Quantity	Part	Part Name DE	Part Name EN	Part Name FR	Manufacturer	Identification	Selection
2		1SAF146823R1200	SENSOR SIN30-Q40T-C1-PK	SENSOR SIN30-Q40T-C1-PK	SENSOR SIN30-Q40T-C1-PK	ABB Stotz	B	std
3		1SAF148811R1200	SENSOR SIF40-Q80N-T-PK	SENSOR SIF40-Q80N-T-PK	SENSOR SIF40-Q80N-T-PK	ABB Stotz	B	std
4		1SAF148822R1000	SENSOR SIN50-Q80N-T-PO	SENSOR SIN50-Q80N-T-PO	SENSOR SIN50-Q80N-T-PO	ABB Stotz	B	std
5		1SAF148822R1200	SENSOR SIN50-Q80N-T-PK	SENSOR SIN50-Q80N-T-PK	SENSOR SIN50-Q80N-T-PK	ABB Stotz	B	std
6		1SAF230111R1000	SENSOR SCF10-M30N-V2-PO	SENSOR SCF10-M30N-V2-PO	SENSOR SCF10-M30N-V2-PO	ABB Stotz	B	std
7		1SAF230111R6000	SENSOR SCF10-M30N-V2-AO	SENSOR SCF10-M30N-V2-AO	SENSOR SCF10-M30N-V2-AO	ABB Stotz	B	std
8		1SAF230511R1000	SENSOR SCF10-M30N-C1-PO	SENSOR SCF10-M30N-C1-PO	SENSOR SCF10-M30N-C1-PO	ABB Stotz	B	std
9		1SAF318542R1000	SENSOR SOR3000-M18N-C1-PO	SENSOR SOR3000-M18N-C1-PO	SENSOR SOR3000-M18N-C1-PO	ABB Stotz	B	std
10		1SAF318553R1000	SENSOR SOD200-M18N-C1-PO	SENSOR SOD200-M18N-C1-PO	SENSOR SOD200-M18N-C1-PO	ABB Stotz	B	std
11		1SAF323242R1000	SOR2000-B26N-U2-PO SENSOR	SOR2000-B26N-U2-PO SENSOR	SOR2000-B26N-U2-PO SENSOR	ABB Stotz	B	std
12		1SAF323253R1000	SENSOR SOD400-B26N-U2-PO	SENSOR SOD400-B26N-U2-PO	SENSOR SOD400-B26N-U2-PO	ABB Stotz	B	std
13		1SAF325151R0001	SENSOR SOLD15-B50N-PVM3	SENSOR SOLD15-B50N-PVM3	SENSOR SOLD15-B50N-PVM3	ABB Stotz	B	std
14		1SAF325153R0001	SENSOR SOLD15-B50N-PVM6	SENSOR SOLD15-B50N-PVM6	SENSOR SOLD15-B50N-PVM6	ABB Stotz	B	std

## Notes

The separator should not be contained in the table data, even within quotation marks. In such cases, the record will not be imported or will be imported incorrectly.

If a CSV column is assigned to a part database field of the type **Number** or **Floating point number**, the corresponding CSV column must be filled correctly; otherwise, the import will abort.

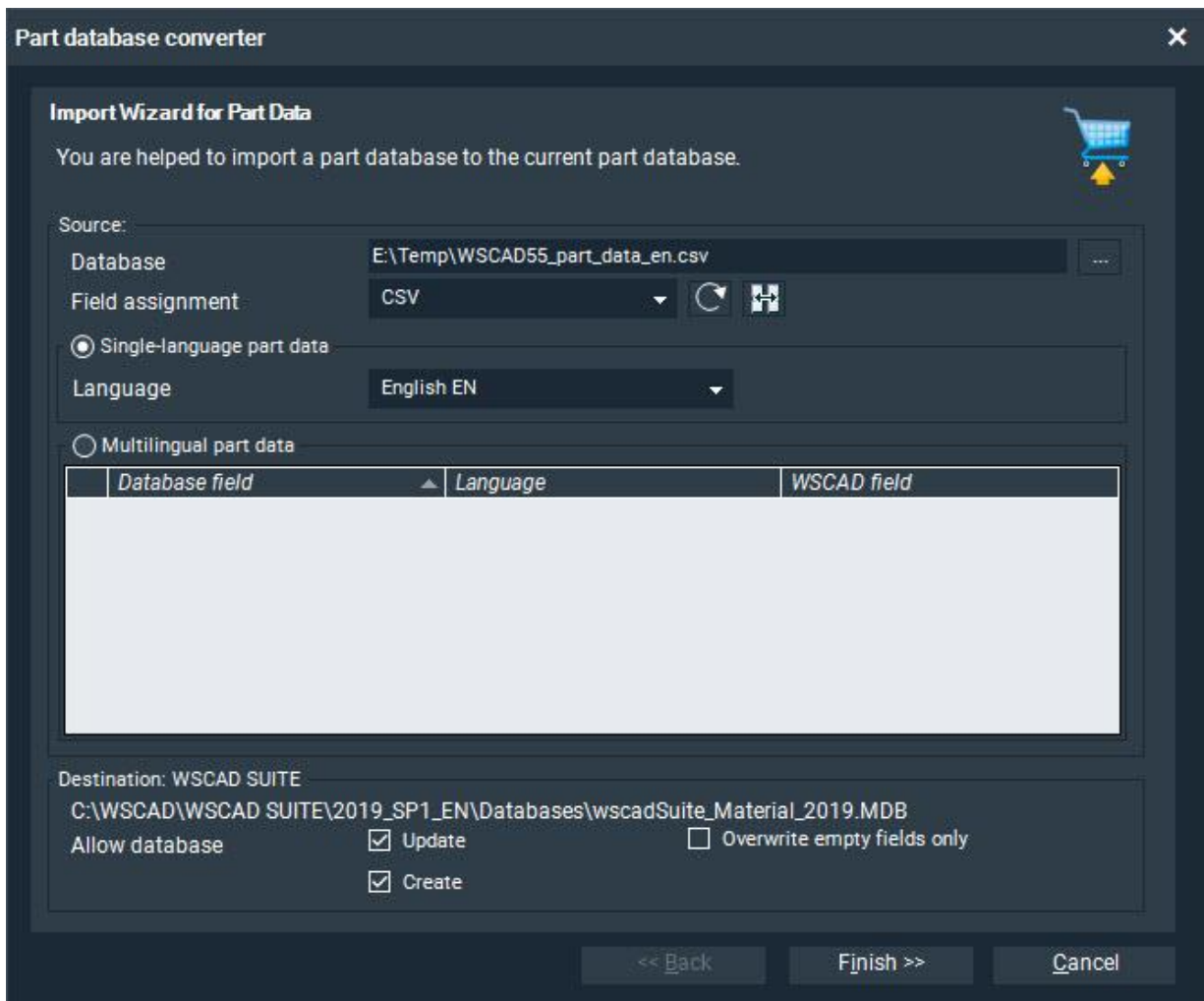
## Save current WSCAD SUITE part database

First, make a backup of the current WSCAD SUITE part database. If the parts are then not imported as desired, you can always access the backup copy.

1. First, check which part database is being used. To do this, click on the main menu command **Tools | Settings (options) | Master data | Part**. Here you can see which type of part database is being used (Access, SQL Server or MySQL).  
Note: The set part database is project-dependent. It is thus possible that another project may use a different part database.
2. You can determine the storage location of the part database via the **Open** symbol button.  
Note: By default, the part databases are stored under the Databases folder in the WSCAD installation directory.
3. Navigate with Windows Explorer to the storage location of the part database and copy it into a directory of your choice.

## Import CSV file

1. Click on **Tools | Master data | Part management**. The Part management dialog opens.
2. Click in the menu of the Part management on **Tools | Database Import CSV**. The **Part database converter** wizard opens.



**Part database converter**

**Import Wizard for Part Data**

You are helped to import a part database to the current part database.

Source:

Database: E:\Temp\WSCAD55\_part\_data\_en.csv

Field assignment: CSV

Single-language part data

Language: English EN

Multilingual part data

Database field	Language	WSCAD field

Destination: WSCAD SUITE

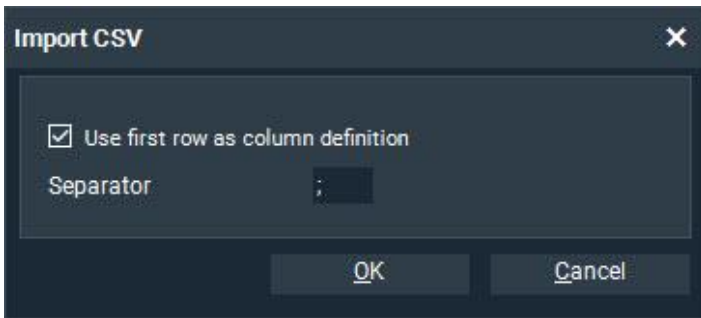
C:\WSCAD\WSCAD SUITE\2019\_SP1\_EN\Databases\wscadSuite\_Material\_2019.MDB

Allow database:  Update  Overwrite empty fields only

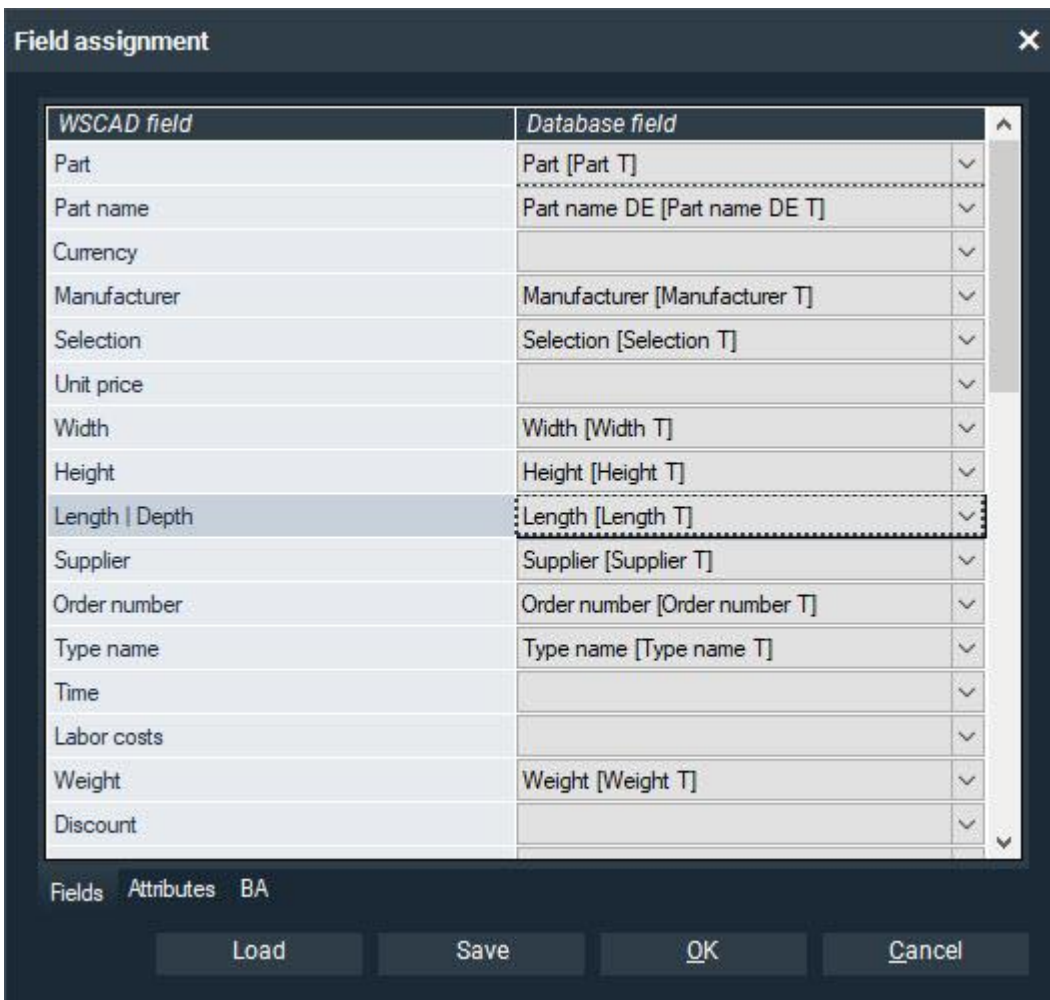
Create

<< Back Finish >> Cancel

- Using the Browse symbol button next to the **Database** field, navigate to the CSV file and open it. The following dialog appears:



- If your CSV file contains column headings, select the check box **Use first row as column definition**.
- Enter the delimiter that separates the records in the CSV file. By default, this is a semicolon or a tab.  
Note: You will see the delimiter when you open the CSV file with a text editor.
- Click **OK**. The **Field assignment** dialog opens.



- Map the columns in the CSV file to the WSCAD part database fields:
  - If the CSV file contains column headers that are named identically to the fields in the part database, the mapping occurs automatically. Assign the columns of the CSV file to the WSCAD fields on the left via the drop-down lists on the right.
  - If the column headers do not match the part database fields or the CSV file does not contain any column headings, you can make the assignments manually. Assign the columns of the CSV file to the WSCAD fields on the left via the drop-down lists on the right.

8. Also make the assignments in the **Attributes** and **BA** tabs. You can use the plus symbol button to create new attributes and to assign column headings to these attributes. The minus symbol button can be used to delete created attributes.
9. If required, you can save the field assignments you specify here in the `.wsfzo` file format. Previously saved field assignments can be loaded.
10. Close the **Field assignment** dialog with **OK**.
11. If the part data to be imported is monolingual, select the language in the **Language** drop-down list.
12. If you have multilingual part data (e.g., with the part names in different languages and a separate column for each language), you can transfer these translations to the database as well. To do this, select the radio button **Multilingual part data**.  
Select the column from the CSV file under **Database field**, enter the language under **Language** and then select the desired WSCAD field under **WSCAD field**.

● Multilingual part data			
	Database field	Language	WSCAD field
−	Part name DE	German DE	Part name
−	Part name EN	English EN	Part name
−	Part name FR	French FR	Part name
+			

13. You can use the plus symbol button to add more columns from the CSV file and assign them to WSCAD fields. With the minus symbol button, you can delete the entries again.
14. Finally, set the following options:
  - **Update:**  
If this check box is selected, existing records will be overwritten with the new data.  
If the check box is cleared, existing records will not be overwritten. In that case, you can only create new records.
  - **Overwrite empty fields only:**  
(only selectable if the **Update** check box is activated)  
If this box is selected, only the empty fields of existing records will be overwritten.  
If the check box is cleared, all the data of existing records will be overwritten.
  - **Create:**  
If this check box is selected, new data records will be created if the records do not already exist.  
If the check box is cleared, no new records will be created. Only existing records are updated.
15. Click **Finish**. The parts are imported. In the left half of the dialog, the column with the plus symbol shows you the newly added parts, and the column to the right shows the changed parts.
16. Finally, click **Done**.