



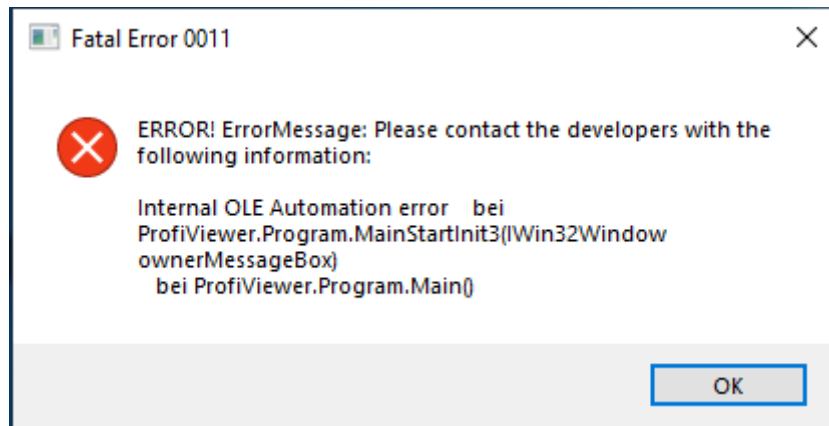
SUITE X

EE CE PI FE BA EI

Electrical Engineering, Cabinet Engineering, P&ID, Fluid Engineering, Building Automation, Electrical Installation

**WScad SUITE WITH
ACCESS DATABASE ENGINE 2016 64-BIT**

If the error shown below appears when the WSCAD SUITE is trying to connect to an Access database, WSCAD SUITE versions in 64-bit mode use the Access Database Engine **2016** 64-bit installed on the PC.



When using the Access Database Engine **2010** 64-bit this error does not appear. However, Microsoft will discontinue the support of this engine together with MS Office 2010 after October 2020.

You can fix this error by downloading and installing the Access Runtime 2016 64-bit (accessruntime_4288-1001_x64_en-us.exe) from the Microsoft website:

<https://www.microsoft.com/en-US/download/details.aspx?id=50040>

This error does not appear with WSCAD SUITE versions in 32-bit mode.

You can query the installed Access Database Engine versions by calling the **Programs and Features** entry in the Control Panel and entering `access` in the search field.

Note:

With the **WSCAD SUITE X PLUS**, the Access Runtime 2016 64-bit is installed at the same time as the Access Database Engine 2016 64-bit is installed. In addition, the Access Runtime 2016 64-bit is stored in the WSCAD SUITE X PLUS installation directory:

`Redist\Access2016\accessruntime_x64.exe`

From this folder you can also install the file if the error occurs anyway.