



# SUITE **X** PLUS

**EE CE PI FE BA EI**

Electrical Engineering, Cabinet Engineering, P&ID, Fluid Engineering, Building Automation, Electrical Installation

**PROJECT-SPECIFIC CONFIGURATION**

---

In the WSCAD SUITE you can adapt the predefined standard settings to your projects under **Tools | Settings (options)**. Some of these settings apply to all projects and others can be defined depending on the project.

The settings are divided as follows:

- Application-specific:  
These settings are global and apply to all projects, e.g., the settings for project backups or revision management. When defining the settings, no project is open or only a project in which the project-specific configuration is deactivated.
- Project-specific:  
For these settings you can choose whether they apply globally or only to one project. The settings are project-specific if the project is open and the project-specific configuration is activated; otherwise, they are global. These settings include, for example, the display of interruption points and potentials, the type of numbering for components and cable cores as well as the part database used.
- User-specific:  
These settings only depend on the Windows login (account). Different Windows users can thus define their own representations of the cursor or the colors of the elements. User-specific settings remain user-specific in all cases.

You can specify whether the project-specific settings should be saved for each project when creating the project (see [Project-specific configuration when creating a new project](#)) or later via the project properties of the opened project (see [Activating or deactivating a project-specific configuration later](#)).

If you use a different project as a template when you create a new project, the project-specific settings are adopted from the template, provided the template already has project-specific settings and you leave the project-specific settings enabled for the new project.

If you disable the project-specific configuration in the project properties of the open project, the project-specific settings for this project are reset to the global settings.

If all projects are closed and you change project-specific settings, these changes are applied to all projects contained in the project management for which the project-specific configuration is disabled. For projects in which the project-specific configuration is enabled, their project-specific settings still apply.

A list of which settings are project-specific and which are still application-specific or user-specific even when the project-specific configuration is active can be found at the end of this article.

### Advantages

The project-specific configuration is useful if

- different clients demand different representations from you.
- you want to create projects with different part databases.
- in a project that has been created once, the display should always remain the same, even if you now prefer different settings for new projects.

## **Disadvantages**

You should not use the project-specific configuration if

- you want a uniform presentation for all projects.
- new or changed parts (e.g., replacement types or changed prices) should also be available immediately for other projects.
- in the case of revisions, old projects should also be adapted to changed specifications for the presentation.
- if you import a project from a colleague and accompanying data (such as additionally used fonts) cannot be supplied.

## **"User Rights" Add-On**

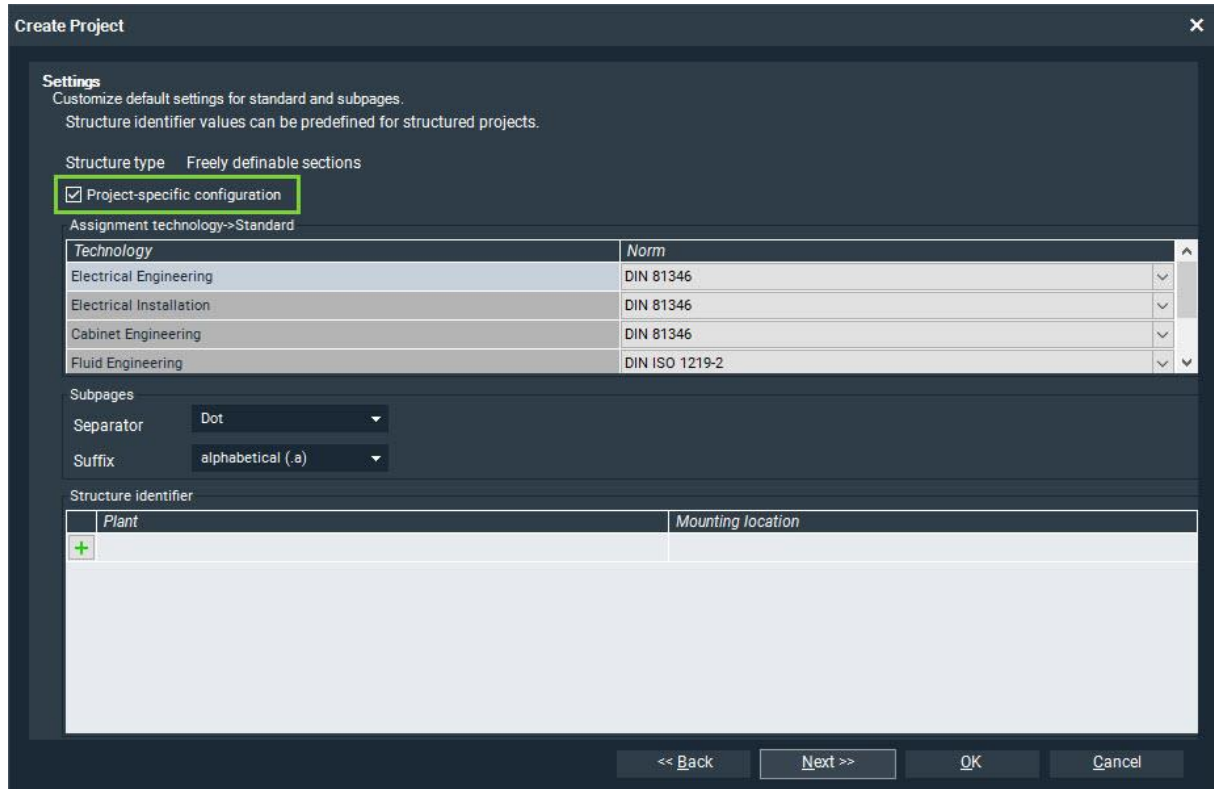
The WSCAD user administration is available to you with the "User Rights" Add-On. This allows you to create WSCAD users and lock individual settings for each user.

## **Tip**

If an unspecific problem occurs with a WSCAD SUITE project and it is not possible to understand why, it is advisable to first back up the project and then delete the project-specific configuration. If this solves the problem, you know that it is due to the project-specific settings. The project-specific configuration is also saved when the project is backed up.

## Project-specific configuration when creating a new project

When you create a new project, you can decide in step 3 of the wizard whether you want to leave the radio button **Project-specific configuration** activated (default) and thus be able to customize all project-specific settings for this project or whether the global settings should apply to the project (radio button deactivated).



### Important:

If you change project-specific settings in an open project with a deactivated project-specific configuration, these settings also apply to all other projects with deactivated project-specific configurations.

If you change application-specific settings in an open project, these apply to all projects anyway.

## Activating or deactivating a project-specific configuration later

You can use the properties dialog of the open project to subsequently change whether the project should use the project-specific settings or the application-specific settings.

If the entry **ON -> Create project-specific configuration** is selected in the **External configuration** drop-down list, there is a distinction between project-specific and application-specific settings. If you change project-specific settings in the open project, they only apply to this project.

If **OFF -> Delete project-specific configuration** is selected instead, all existing project-specific settings are deleted, and the global settings are applied instead.

The screenshot shows the 'Properties Project' dialog box with the 'General' tab selected. The 'External configuration' dropdown menu is open, displaying three options: 'ON -> Create project-specific configuration.', 'OFF -> Delete project-specific configuration.', and 'ON -> Create project-specific configuration.'. The first and third options are highlighted in blue, and the entire dropdown area is enclosed in a green box. Other fields include Project name (SUITE DEMO 2020 V2.0), Designation (Sheet metal punch), Project number, Drawing number (01/2019), Order no. (-), Project description (Sheet metal punch), Drawn by (Huwert), Checked by, Date (12.11.18), Working directory (C:\WSCAD\WSCAD SUITE\2020\Projects\SUITE DEMO 2020 V2.0), Logo (C:\WSCAD\WSCAD SUITE\2019\_BA\_DE\Logos\WSCAD\_Logo\_Claim\_pos\_4c.png), and checkboxes for 'Use project templates' (checked) and 'Form frame general' (unchecked).

### Important:

If the radio button is deactivated, please note that the project-specific settings for this and other projects may change automatically. This occurs when all projects are closed and project-specific settings are changed, or when the project-specific settings are changed in another open project with the project-specific configuration also deactivated.

## Configuration files

The project-specific and user-specific settings are saved in the configuration files.

- If you change a project-specific setting, this is entered in the corresponding section in the file  
`<WSCAD project directory>\Settings\project.wsCFG.`
- If you change a user-specific setting, this is saved in the corresponding section in the file  
`<WSCAD installation directory>\Settings\>Windows-User>\user.wsCFG.`

## Settings table

### Abbreviations:

**A** : Application-specific (program-specific) settings

**P**: Project-specific settings

**U**: User-specific settings

Tools   Settings (options). ...	Explanation	A	P	U
General	Automatically load drawing on program start.			x
General	Save image position and zoom with every drawing.			x
General	Orthogonal drawing mode			x
General	Snap			x
General	Quadrant zoom			x
General	Show flag for multilingual text entry.		x	
General	Multilingual text entry		x	
General	Zoom via mouse wheel			x
General	Work direction		x	
General	Shortcut for aux. lines	x		
General	Copyright	x		
General	Copyright notice	x		
Language	Language program			x
Language	Language help area			x
Language	Remaining settings		x	
Safety	Audio signal for incorrect user input	x		
Safety	Deleted files into the recycle bin	x		
Safety	Prompts for creating a project backup	x		
Safety	Create automatic backup every ... minutes	x		
Safety	Create automatic backup	x		
Directories	Data directory	x		
Directories	Directory - Projects	x		
Directories	Directory - Libraries		x	
Directories	Directory - Databases		x	
Directories	Directory - Data sheets	x		
Directories	Directory - Help files	x		
Directories	Directory - Global logos	x		
Directories	Directory - Pattern	x		
Directories	Directory - Backup			x
Directories	Directory - Temporary files			x
Directories	Directory - Templates		x	
Directories	Directory - Macros		x	
Directories	Directory - Project Wizard macros	x		
Directories	Directory - Plugins	x		
Directories	Directory - 3D		x	
Internet	WebHelp	x		
Internet	Remaining settings	x		
View	Color scheme			x

Tools   Settings (options). ...	Explanation	A	P	U
View	Coordinate display		x	
View	Date		x	
View	Tiles minimum width			x
View	Match background color to interface design			x
View	Ref. desig. - Font weight		x	
View	Ref. desig. - No leading sign		x	
View	Ref. desig. - Always show complete ref. name		x	
View	Logo	x		
View   Cursor	Settings for cursor			x
View   Element colors	Predefined colors for elements			x
View   Cabinet colors	Predefined colors for Cabinet			x
View   Colors xxx   Custom	User-defined colors (64 colors UC065 - UC128)	x		
View   Text	Definitions for texts		x	
View   Lines	Definitions for lines	x		
View   Layer	Definitions for layers		x	
View   Contact comb	Settings for contact combs		x	
View   Connection	Settings for connections		x	
View   Default	Defaults			x
View   Symbol Editor	Settings of Symbol Editor		x	
Printer	Definition printer			x
Paper sizes	Definition of paper sizes	x		
Project	Separator	x		
Project	Suffix	x		
Project	Norms	x		
Project	Auto-PDF export on closing project		x	
Project	Retain all structure identifiers when copying documents		x	
Project   Templates	Definitions for templates		x	
Project   Structure templates	Structure templates	x		
Project   Structure identifier	Definitions for structure identifiers	x		
Project   Defaults	Defaults (Additional information)	x		
Project   Revision management	Definitions of Revision Management	x		
Master data	No settings	-	-	-
Master data   Part	Settings - Part		x	
Master data   Data point management	Settings - Data Point Management		x	
Master data   Lexicon	Settings - Lexicon		x	
Master data   Addresses	Settings - Addresses	x		
Master data   Color code	Settings - Color code		x	
Master data   Online documents	List - Online documents	x		
Symbol	Settings for symbols		x	
Symbol   Properties	Show electrical properties from EI in EE as well		x	
Symbol   Additional texts	Definitions - Additional texts		x	
Symbol   Black box	Definitions - Black box		x	
Symbol   Component box	Definitions - Component box		x	
Symbol   Structure area	Settings - Structure area		x	
Symbol - Parent/Child	Properties - Parent/Child element			
Symbol   Cable	Properties - Cable and predefined symbols for cable		x	
Symbol   Terminal	Properties - Terminals and predefined symbol for terminals		x	
Symbol - Plug/Socket	Properties - Plugs/sockets and predefined symbols for plugs and sockets		x	
Symbol   Contactor	Properties - Contactor and predefined symbols for contacts		x	

## Project-specific configuration

Tools   Settings (options). ...	Explanation	A	P	U
Symbol   PLC	Properties - PLC		x	
Symbol   PLC special texts	Definitions PLC special texts		x	
Numbering	No settings	-	-	-
Numbering   Reference	Settings - Numbering - Reference		x	
Numbering   Cable wire	Settings - Numbering - Cable wire		x	
Numbering   Terminal	Settings - Numbering - Terminal		x	
Numbering   Plug	Settings - Numbering - Plug		x	
Report	Expand text <data content> with ref. name		x	
Report	Use installed Microsoft Excel version for Excel export	x		
Report	Build project database for overall report		x	
Report	Use increment from form		x	
Report	Library - Graphical terminal chart		x	
Report	Library - Graphical cable chart		x	
Report	Format for length specifications		x	
Various lists and plans	Remaining settings		x	
Cross-reference	Settings - Cross-references		x	
Technology cross-reference	Settings - Technology cross-references		x	
Labels	Settings of submenu items	x		
Installation	Settings - Installation		x	
Installation	Create plan - Distance left	x		
Installation   Installation zones	Positions of installation zones		x	
Installation   Wall hatching	Wall hatching		x	
Installation   Cable	Styles - Cable	x		
Installation   Laying system	Styles - Laying system	x		
Cabinet	Settings - Cabinet		x	
Cabinet   3D	Settings - Cabinet 3D		x	
Cabinet   Routing	Settings - Cabinet Routing		x	
Fluid	Settings - Fluid		x	
Building Automation	Settings - Building Automation			x
Building Automation - Medium connection line	Definitions - Medium connection line	x		
Building Automation   Building Automation Plugin	Definition of "BKS_Open" plugin		x	
P+I Diagram	P&ID settings			x
P+I Diagram   Medium connection line	Definitions - Medium connection line	x		
Add-On Project Wizard	Project Wizard Settings	x		
Add-On Project Wizard   Positions	Definition of positions	x		
Add-On Project Wizard   Variable	Definition of variables	x		